

24-AUG-18 - Friday Day 07:00-17:00 (Phase 1) see <EXHIBIT 1 and 1a>

TW R closed from TW E south to RW 36

Removal of Hold Position & Stripping Markings

NOTAMs:

- Active until August 31, 2018

24-AUG-18- Friday Night 21:00-07:00 (Phase 1) see <EXHIBIT 1 and 1a>

TW R closed from TW E south to RW 36

Continue removal & installation of Electrical on 9R at TW R including up to RW 18-36

NOTAMs:

- Active until August 31, 2018

24-AUG-18-Friday Night 21:00-06:00 (Phase 3) see <EXHIBIT 3 and 3a>

Close Intersection TW R @ RW 9C-27C (south of TW B & north of TW C)

Install Mandatory Signs 126 & 121

Contingent on CEMEX Plant Availability Complete One or Both Signs 123 A/B

Close Intersection TW C east of RW 18-36 (taxiway) to TW B7

Install Foundation for NEW Mandatory Signs 123A & 123B

Remove barricades

NOTAMs: CANX

- ! SFB 08/135 SFB RWY 18/36 CLSD EXC TAX BTN RWY 09L/27R AND TWY S 1808231100-1808312100
- ! SFB 08/136 SFB RWY 18/36 BTN TWY C AND TWY S CLSD TO ACFT WINGSPAN MORE THAN 79FT 1808231100-1808312100

Issue NOTAMs: 2100L/24 – 0600L/25

- RWY 09C/27C CLSD
- TWY M & P CLSD
- TWY R CLSD BTN TWY C and TWY B
- TWY C CLSD BTN TERM APRN and TWY B7 CLSD
- RWY 18/36 CLSD EXC TAX BTN RWY 09L/27R AND TWY B

Re-issue NOTAMs Aug 25 @ 0600L until Aug 26 @ 2100L

- SFB RWY 18/36 BTN TWY C AND TWY S CLSD TO ACFT WINGSPAN MORE THAN 79FT
- SFB RWY 18/36 CLSD EXC TAX BTN RWY 09L/27R AND TWY S

25- AUG-18 Saturday Day 07:00-17:00 see <EXHIBIT 1 and 1a>

TW R closed from TW E south to RW 36

Milling of RW 9R between TW R & 18-36 (**Fulltime ESCORT - MAINTENANCE**)

NOTAMs:

- Active until August 31, 2018

25-AUG-18 - Saturday Night 21:00-07:00 (Phase 1)

No scheduled work

26-AUG-18 Sunday Night 21:00-07:00 (Phase 1) see <EXHIBIT 1 and 1a>

TW R closed from TW E south to RW 36

Install new Markings

NOTAMs:

- Active until August 31, 2018

26 – AUG-18 Sunday Night 21:00-06:00 (Phase 5) see <EXHIBIT 4>

Close Intersection of RW 27C and RW 18-36 (taxiway)

Demo & Pour (high-early concrete) Mandatory Signs 124 (In Place) NW corner of Intersection

Mandatory Signs 124 not in place during Monday DAY

26–AUG-18 Sunday Night 21:00-06:00 (Phase 3) see <EXHIBIT 4>

Time Permitting Complete One or Both Signs 123 A/B

Close Intersection TW C east of RW 18-36 (taxiway) to TW B7

Install Foundation for NEW Mandatory Signs 123A & 123B

Remove barricades

26–Aug–18 Sunday Night 21:00-06:00 (Phase 2A) see <EXHIBIT 4 and 3a>

Close RW 18-36 (taxiway) south of RW 27C Removal / Cleaning of RW Markings south of RW 27C

NOTAMs: Expires @ 2100L

- SFB RWY 18/36 CLSD EXC TAX BTN RWY 09L/27R AND TWY S
- SFB RWY 18/36 BTN TWY C AND TWY S CLSD TO ACFT WINGSPAN MORE THAN 79FT

Issue NOTAMs: 2100L – 0600L

- RWY 09C/27C CLSD
- TWY M & P CLSD
- TWY R CLSD BTN TWY C and TWY B
- TWY C CLSD BTN TERM APRN and TWY B7 CLSD
- RWY 18/36 CLSD EXC TAX BTN RWY 09L/27R AND TWY B

Re-issue NOTAMs Aug 27 @ 0600L until Aug 27 @ 2100L

- SFB RWY 18/36 BTN TWY C AND TWY S CLSD TO ACFT WINGSPAN MORE THAN 79FT
- SFB RWY 18/36 CLSD EXC TAX BTN RWY 09L/27R AND TWY S
- Prior to 0600L Issue NOTAM sign# 125 & 126 as missing.

27- AUG – 18 Monday Day 07:00L-17:00L Phase 1 see <EXHIBIT 1 and 1a>

TW R closed from TW E south to RW 36

Clean & Prep Area Milled for Turf

Install Turf

NOTAMs:

- Active until August 31, 2018

27-AUG-18 Monday Night 21:00L-07:00L (Phase 1) see <EXHIBIT 5>

TW R closed from TW E south to RW 36

NOTAMs:

- Active until August 31, 2018

27-AUG-18 Monday Night 21:00L-07:00L (Phase 5) see <EXHIBIT 5>

Close Intersection of RW 27C and RW 18-36 (taxiway)

Install Mandatory Sign 125 & 126

Demo & Pour (high-early concrete) Mandatory Signs 124 & 127 (In Place) NW corner of Intersection

Mandatory Signs 124 & 127 not in place during Tuesday DAY

Cont.

27- AUG-18 Monday Night 21:00L-07:00L (Phase 2A) see <EXHIBIT 5 and 3a>

Close RW 18-36 (taxiway) south of RW 27C

Removal / Cleaning of RW Markings south of RW 27C

Install New Markings (Threshold & Piano Keys RW 36)

NOTAMs: Expires @ 2100L

- SFB RWY 18/36 CLSD EXC TAX BTN RWY 09L/27R AND TWY S
- SFB RWY 18/36 BTN TWY C AND TWY S CLSD TO ACFT WINGSPAN MORE THAN 79FT

Issue NOTAMs: 2100L – 0600L

- RWY 09C/27C CLSD
- TWY M & P CLSD
- TWY R CLSD BTN TWY C and TWY B
- TWY C CLSD BTN TERM APRN and TWY B7 CLSD
- **RWY 18/36 CLSD**

***Re-issue* NOTAMs Aug 28 @ 0600L until Aug 28 @ 2100L**

- SFB RWY 18/36 BTN TWY C AND TWY S CLSD TO ACFT WINGSPAN MORE THAN 79FT
- SFB RWY 18/36 CLSD EXC TAX BTN RWY 09L/27R AND TWY S
- Prior to 0600L Issue NOTAM sign# 125 & 127 as missing.

28-AUG-18 Tuesday Day 07:00-17:00 (Phase 1) see <EXHIBIT 1 and 1a>

TW R closed from TW E south to RW 36

Install Turf

NOTAMs:

- Active until August 31, 2018

28-AUG-18 Tuesday Night 21:00L-07:00L/29 (Phase 1) see <EXHIBIT 6 and 3a>

TW R closed from TW E south to RW 36

No Scheduled Work NOTAM in place

28-AUG-18 Tuesday Night 21:00L-06:00L/29 (Phase 5) see <EXHIBIT 6 and 3a>

Close Intersection of RW 27C and RW 18-36 (taxiway)

Install Mandatory Sign 125 & 127

Demo & Pour (high-early concrete) Mandatory Signs **128 & 122** (In Place) NE corner of Intersection

Mandatory Signs **128 & 122** not in place during Wednesday DAY

28-AUG-18 Tuesday Night 21:00L-06:00L/29 (Phase 2A) see <EXHIBIT 6 and 3a>

Close RW 18-36 (taxiway) south of RW 27C

Install new RW Markings

NOTAMs: Expires @ 2100L

- SFB RWY 18/36 CLSD EXC TAX BTN RWY 09L/27R AND TWY S
- SFB RWY 18/36 BTN TWY C AND TWY S CLSD TO ACFT WINGSPAN MORE THAN 79FT

Issue NOTAMs: 2100L – 0600L/29

- RWY 09C/27C CLSD
- TWY M & P CLSD
- TWY R CLSD BTN TWY C and TWY B
- TWY C CLSD BTN TERM APRN and TWY B7 CLSD
- **RWY 18/36 CLSD**

(Cont. next page)

****28-AUG-18 Tuesday Night 23:00L or (last air carrier) - 06:00L/29 (Phase 5) see <EXHIBIT 7>**

Close Intersection of RW 9L & 27R and RW 18-36 (taxiway)

Removal / Cleaning of RW Markings @ Intersection of RW 9L & 27R and RW 18-36

(This work should not take very long, removing 10' of two C/L dashes and cleaning edge markings)

See below

NOTAMS: @ (2300L or after last air carrier operation) until (Complete with Hydroblasting/Cleaning of RWY markings)

- CANX NOTAM –

Issue NOTAMs

- SFB CLSD to AIR CARRIER TRAFFIC
- RWY 09L/27R CLSD
- RWY 18/36 CLSD until 0600 (issued previously)

Once complete with the removal and cleaning of RWYs intersection markings

Re-Open RWY 09L 27R then continue with hydro blasting and cleaning RWY marking BTN RWY09L/27R and TWY C

CANX the above NOTAMs in red: <see EXHIBIT 7a>

Issue NOTAMs: Until 0600L

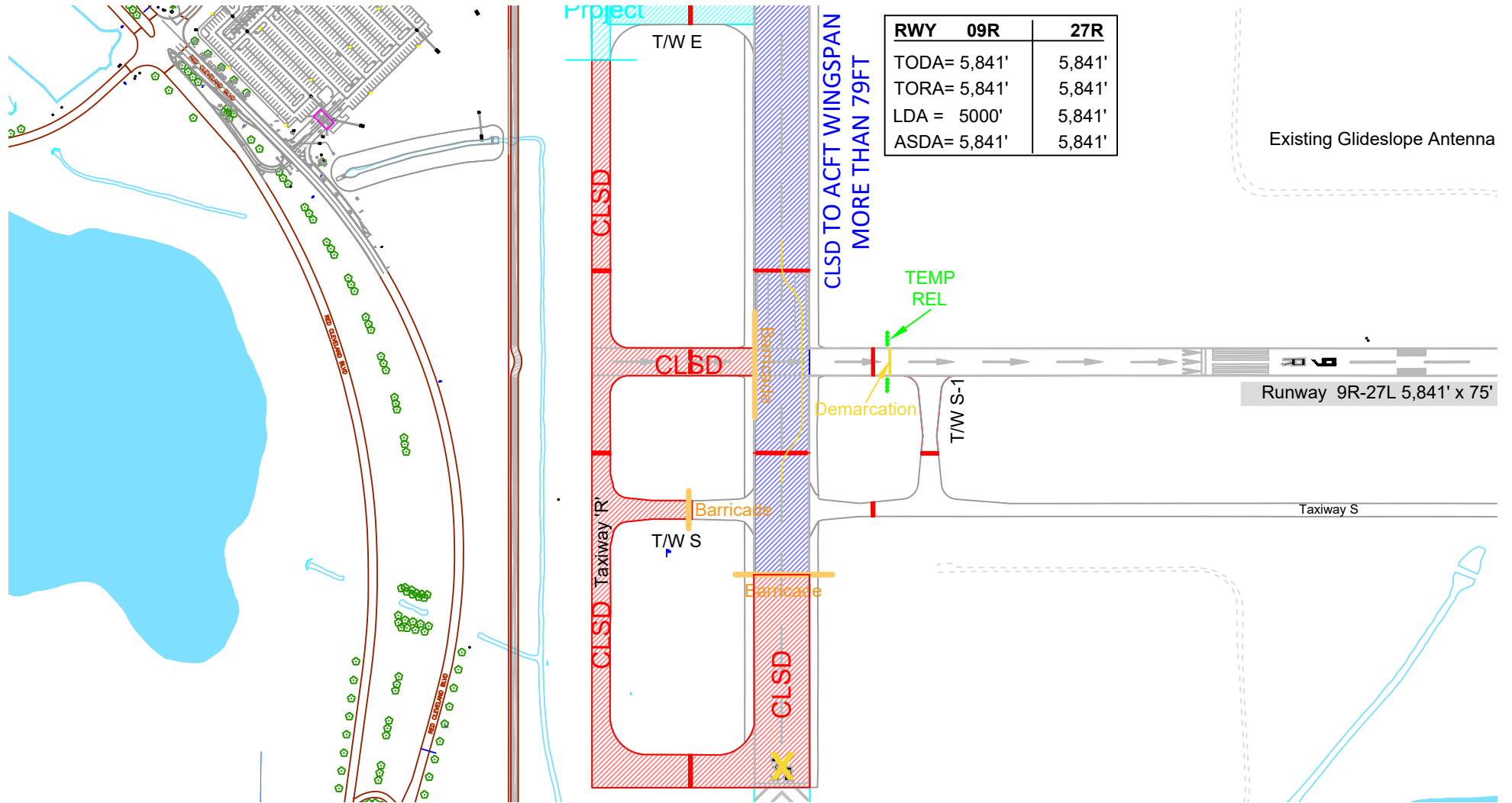
- TWY B CLSD BTN TWY R AND RWY 18/36
- RWY 18/36 CLSD (still in effect til 0600 from above)

***Re-issue* NOTAMs Aug 29 @ 0600L until Aug 29 @ 2100L**

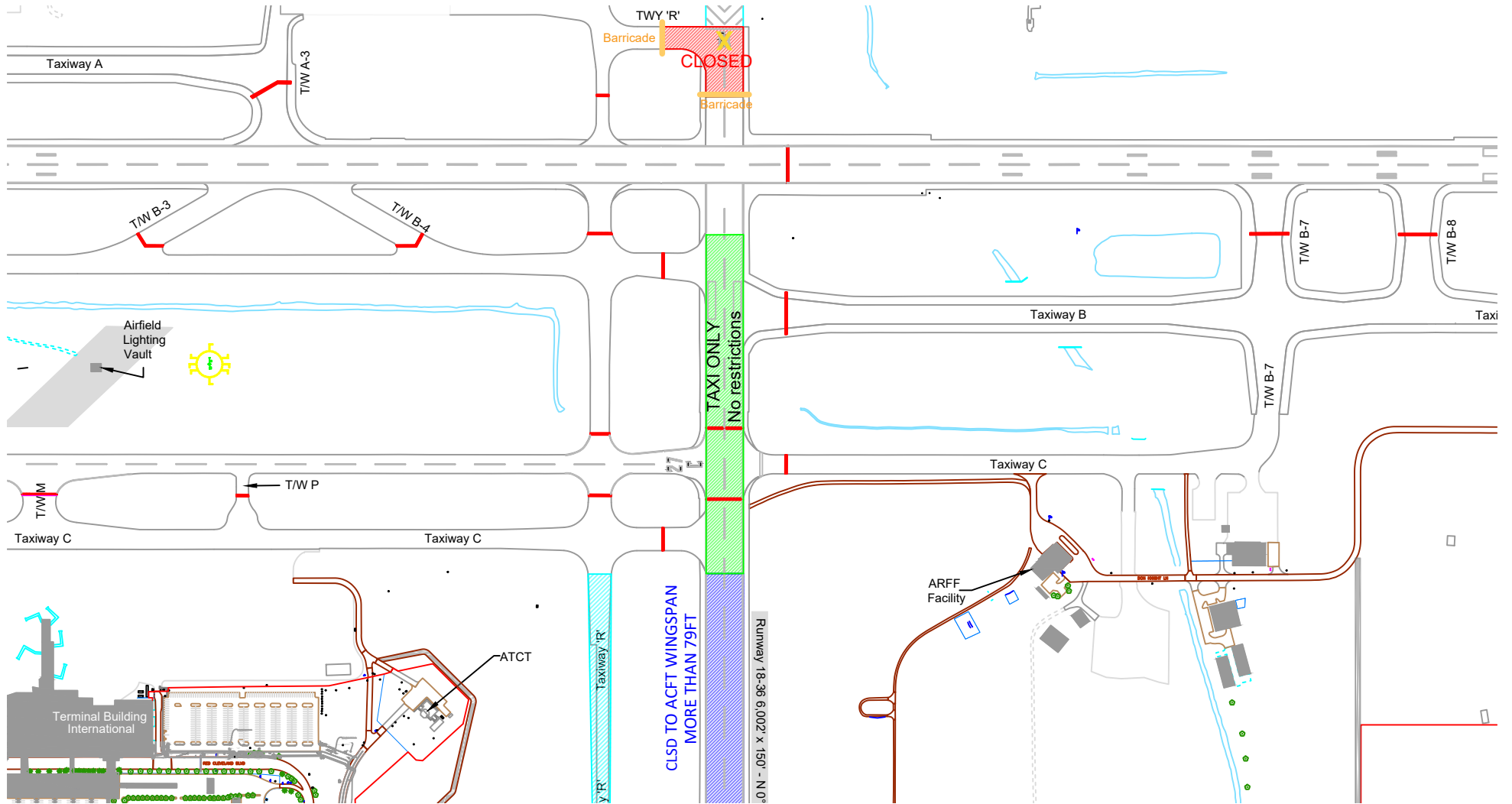
- SFB RWY 18/36 BTN TWY C AND TWY S CLSD TO ACFT WINGSPAN MORE THAN 79FT
 - SFB RWY 18/36 CLSD EXC TAX BTN RWY 09L/27R AND TWY S
 - Prior to 0600L Issue NOTAM sign# 128 as missing.
-

August 23-31 2018

0700L/23 until 1700L/31



August 23-31 2018
0700L/23 until 1700L/31



Thursday PM
 August 23, 2018
 2100L/23 until 0600L/24

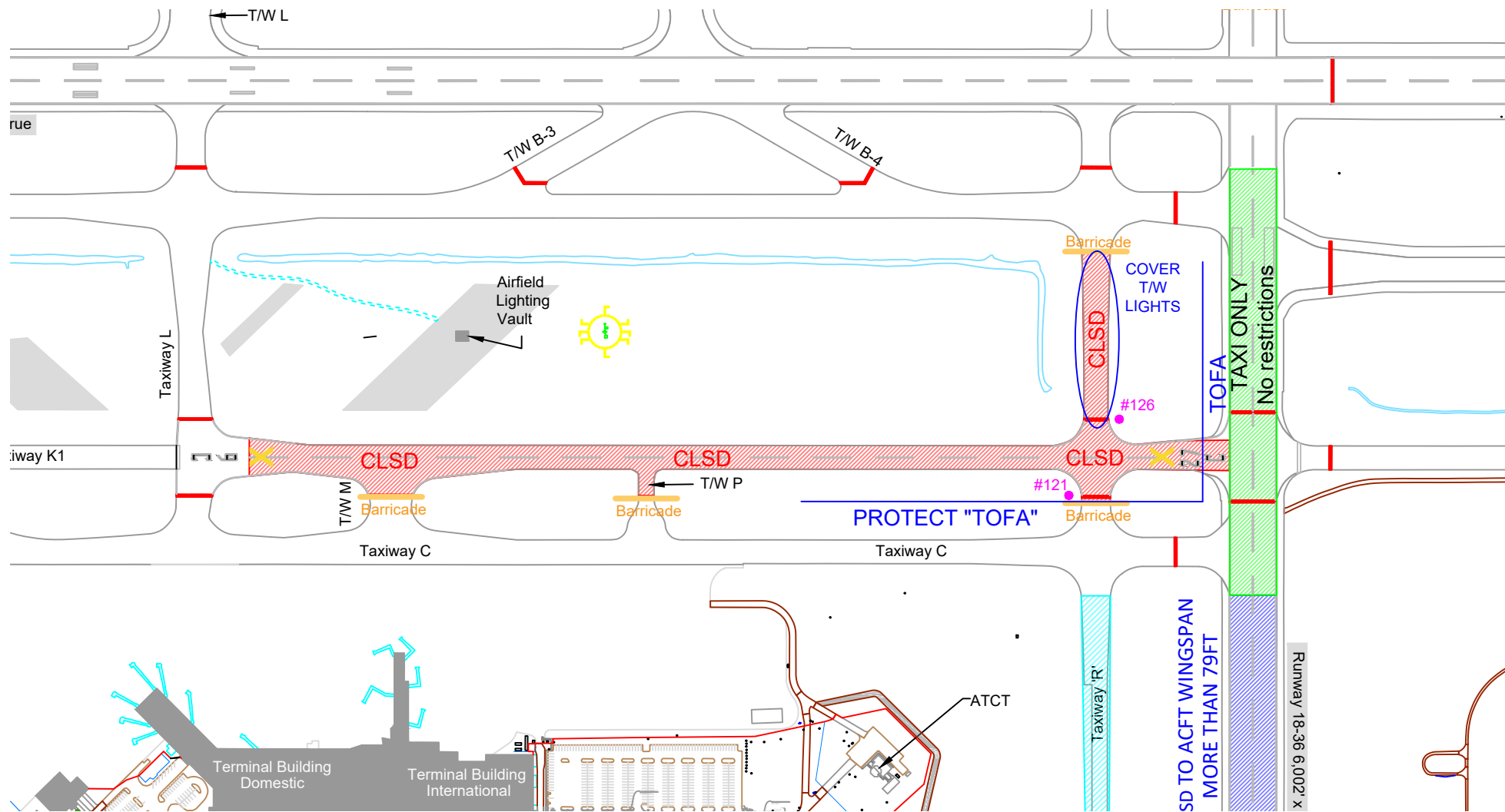
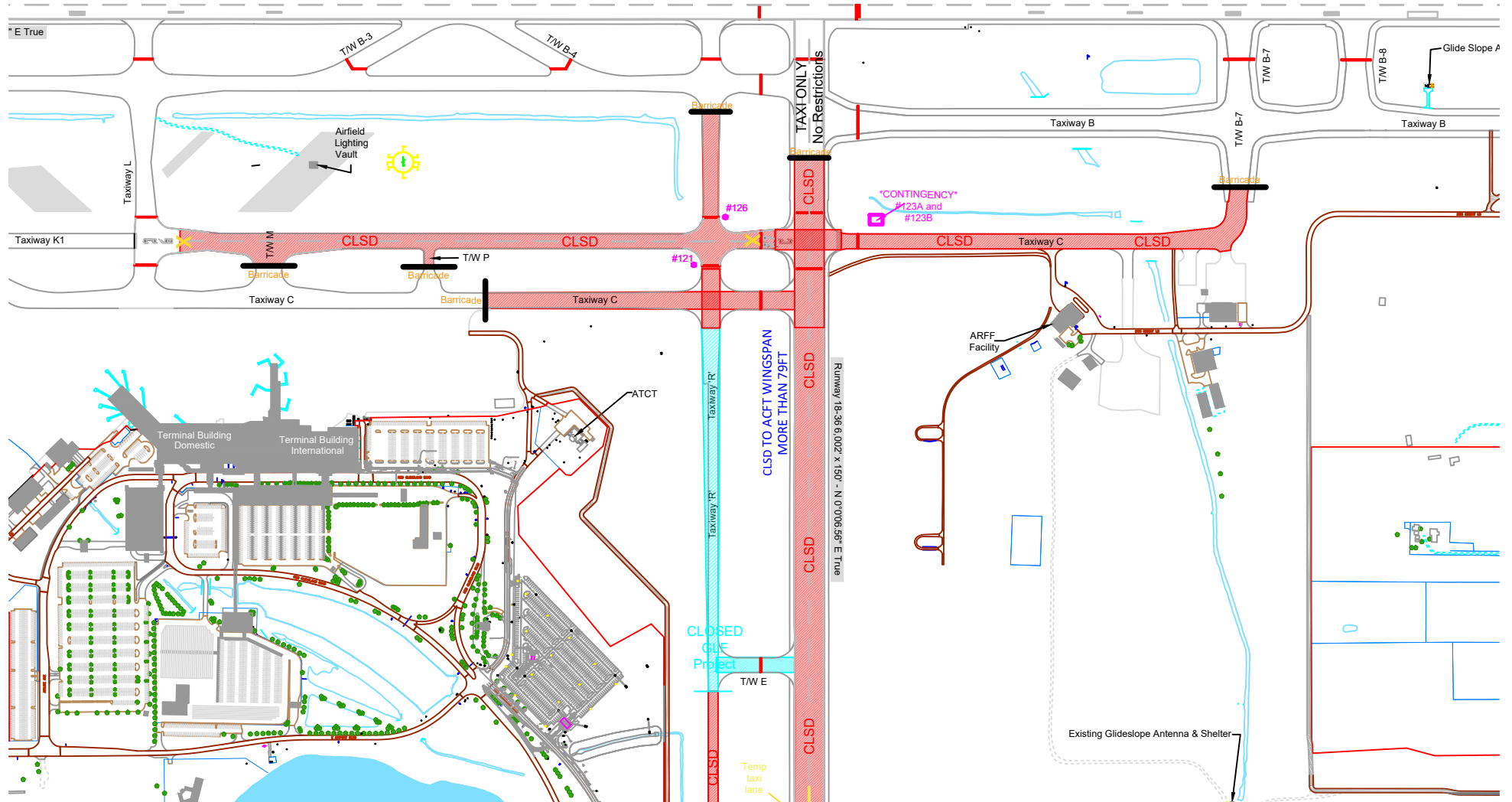
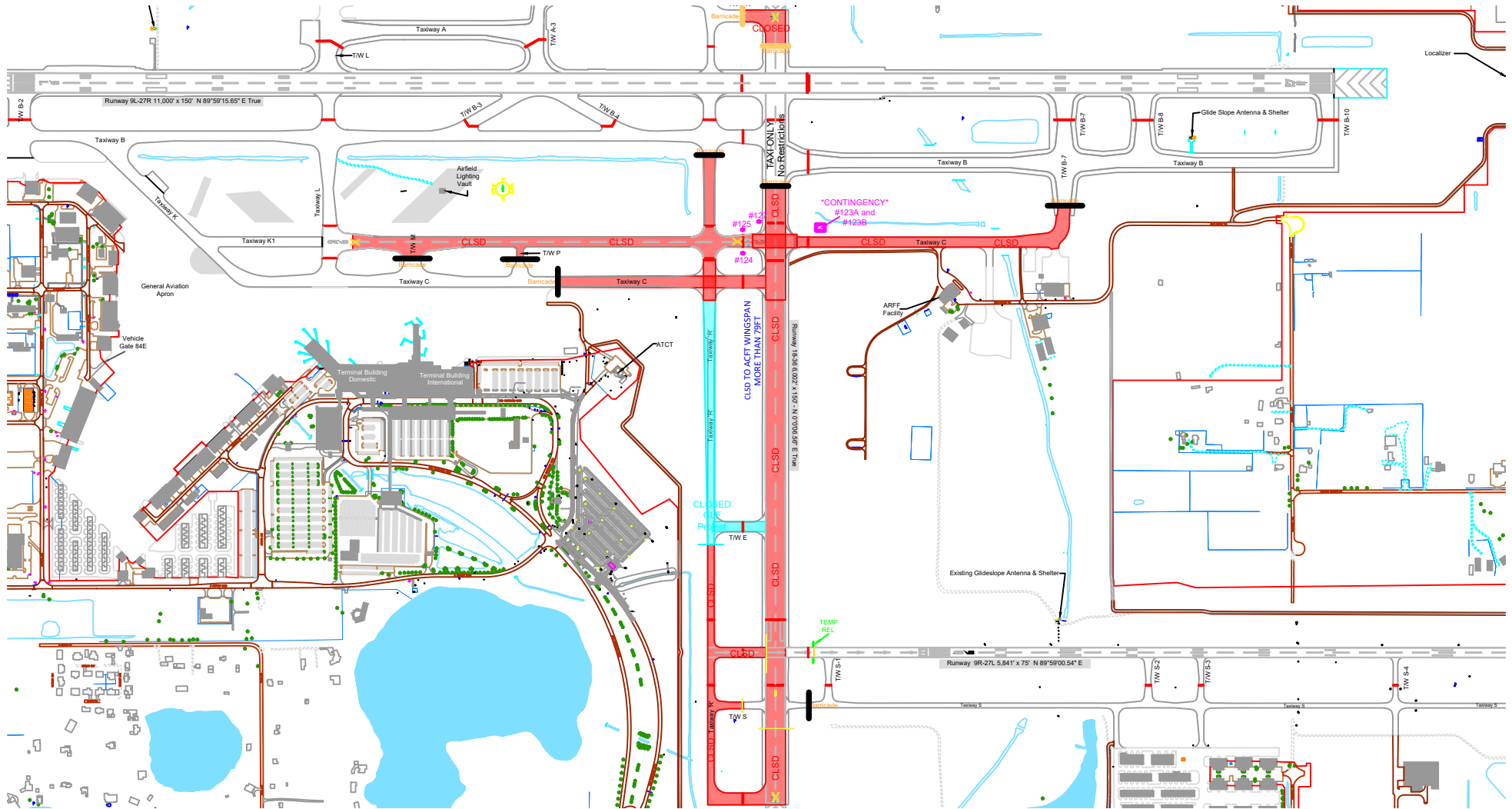


Exhibit 2

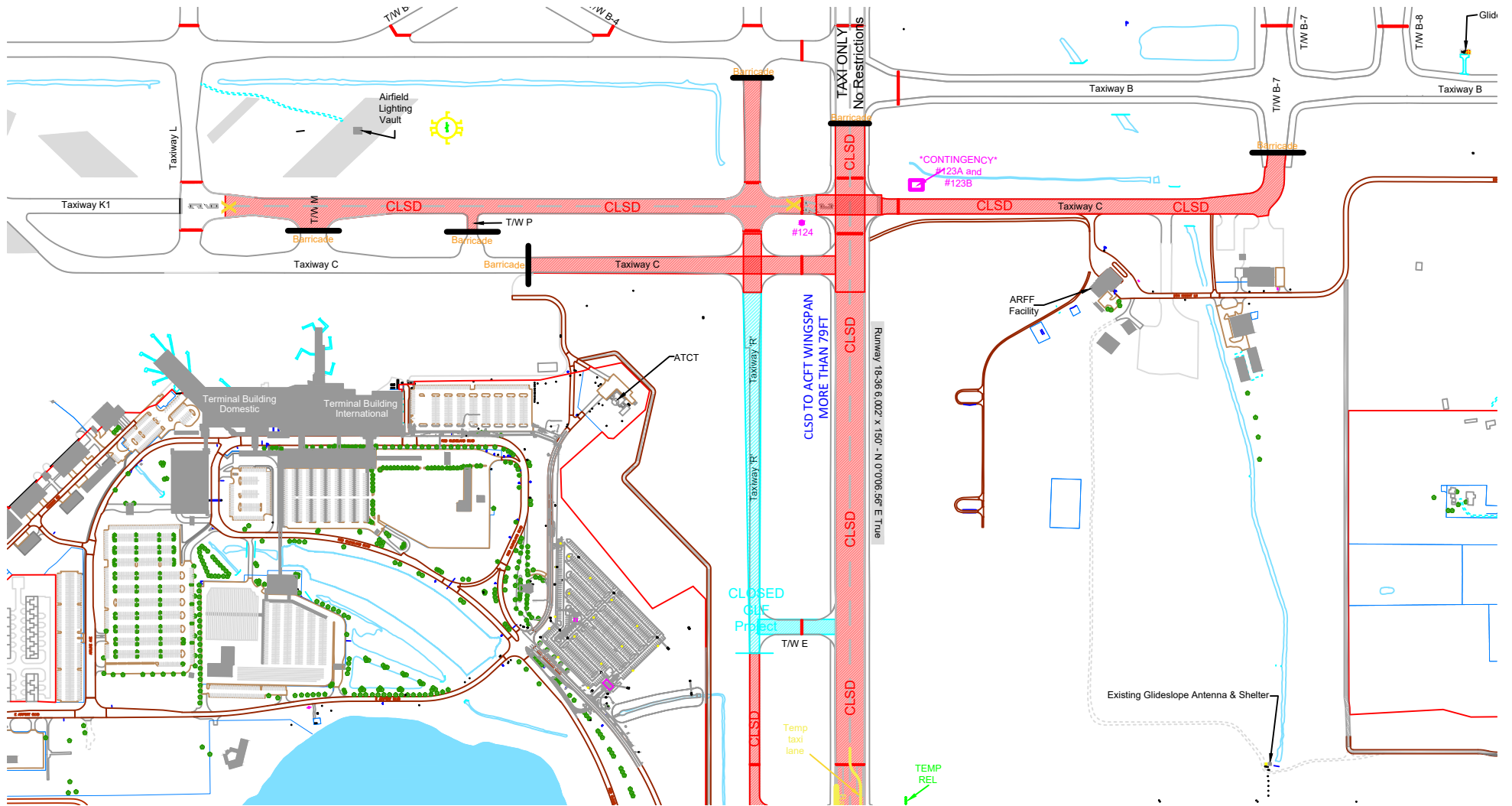
Friday PM
August 23, 2018
2100L/23 until 0600L/24



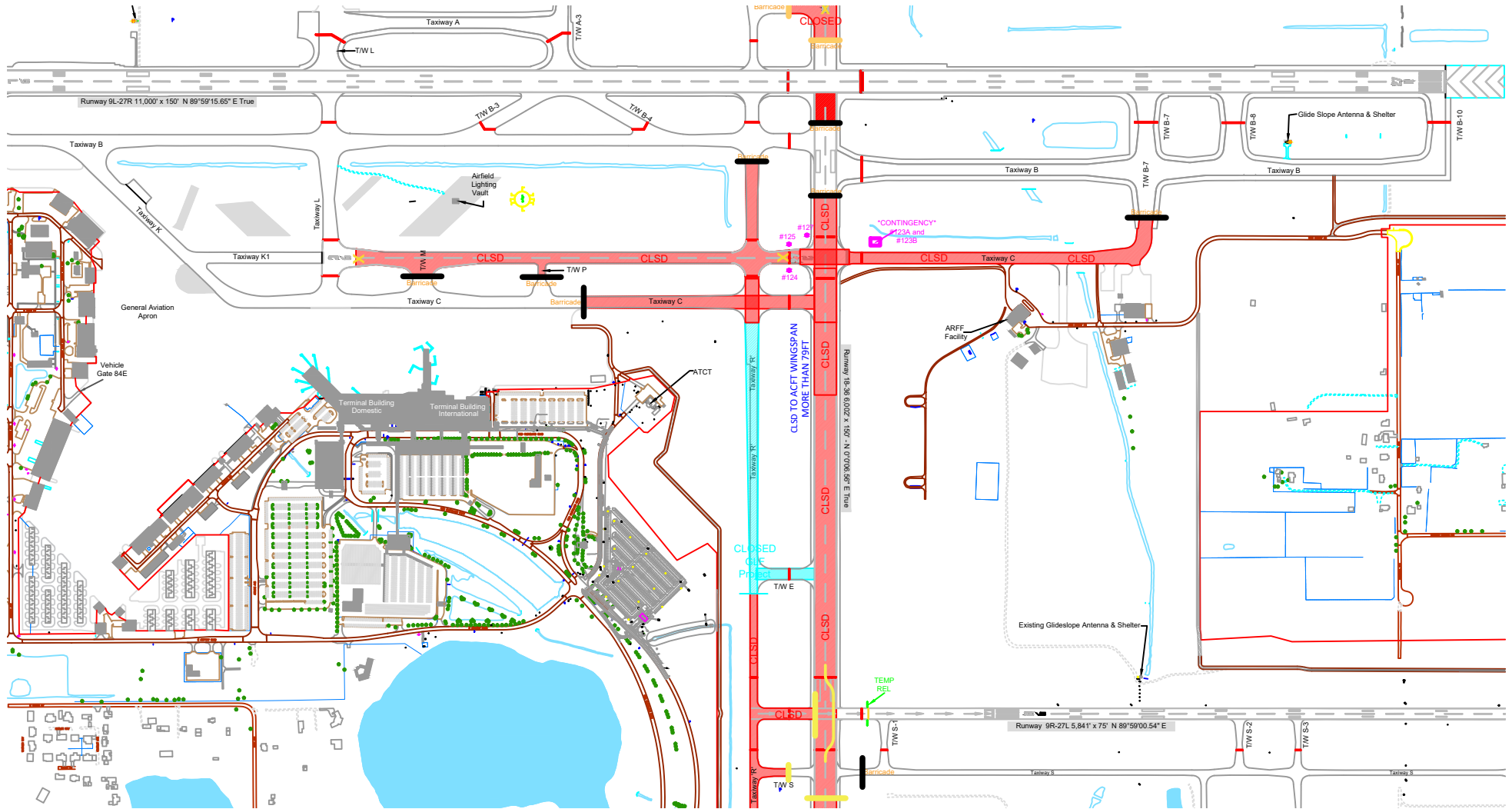
Friday PM OVERVIEW
August 24, 2018
2100L/24 until 0600L/25



Sunday PM
August 26, 2018
2100L/26 until 0600L/27



Monday PM
August 27, 2018
2100L/27 until 0600L/28



Tuesday PM
August 28, 2018
2100L/28 until 0600L/29

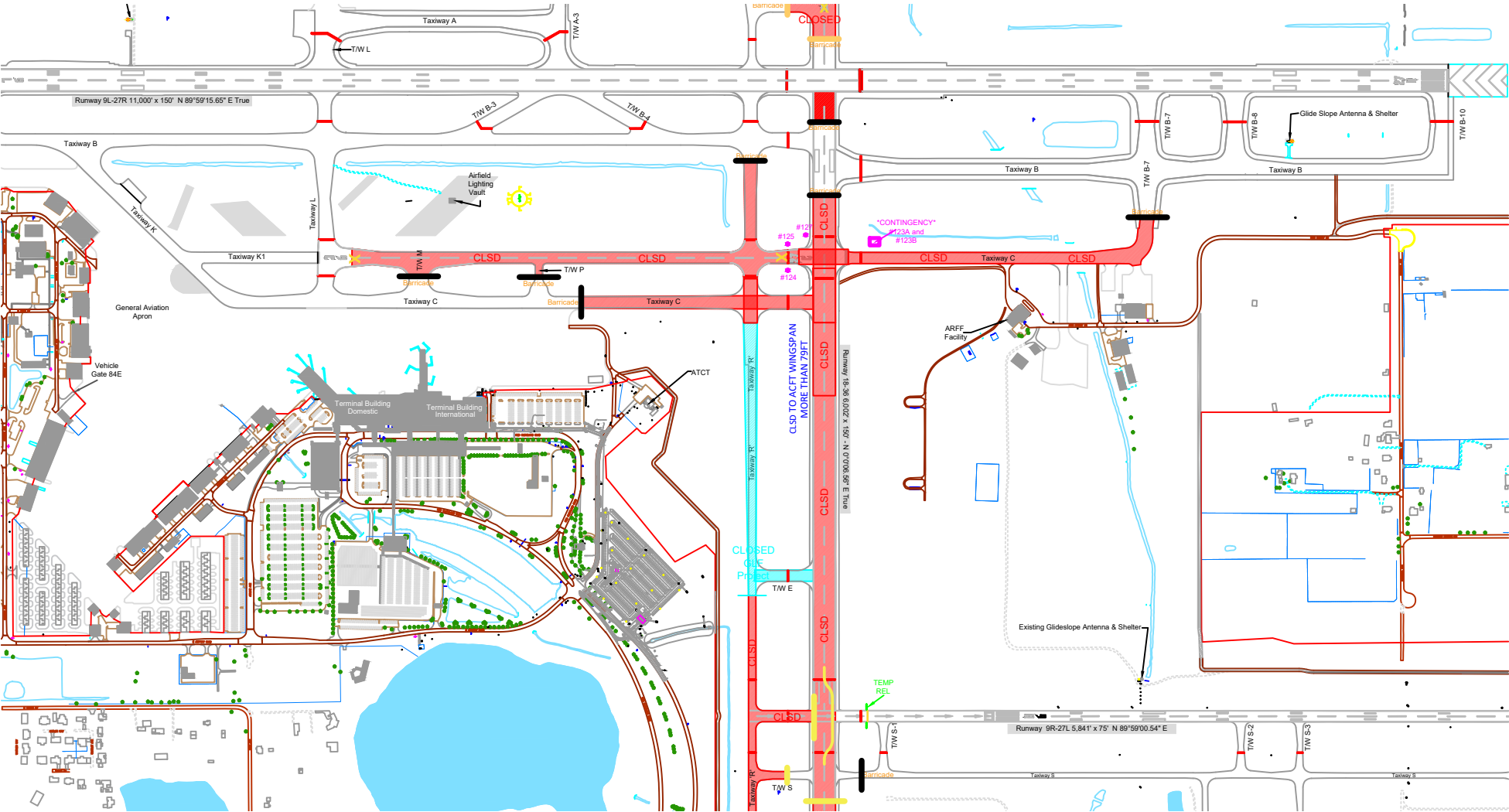
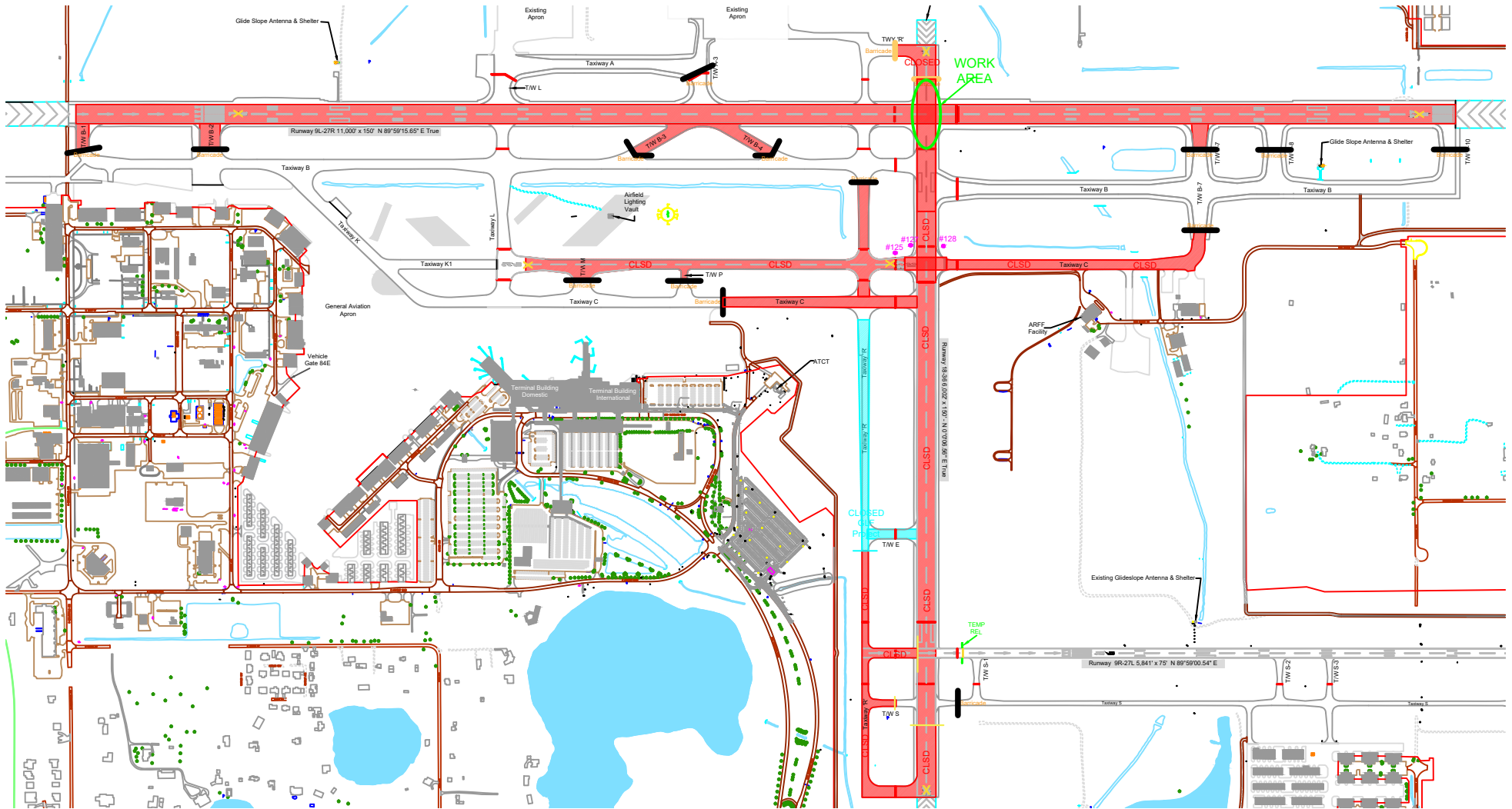


Exhibit 6

Tuesday PM RWY INTERSECTION CLOSURE
August 28, 2018
2300L or last A/C until cleared of 09L/27R



Tuesday PM
August 28, 2018
Following RWY 09L/27R Closure

